
[LEGAL NOTICE NO. 56]

BIOSECURITY ACT 2008

**Declaration of a Biosecurity Emergency Area for
Asian Subterranean Termites
(*Coptotermes gestroi*)**

IN exercise of the powers conferred on me by section 77 of the Biosecurity Act 2008, with the advice of the Biosecurity Authority of Fiji and in consultation with the National Disaster Management Council, I hereby declare the area of Nakasi (18° 03' 51" S 178° 31' 12" E) as identified in the Schedule to this Declaration as a biosecurity emergency area for Asian Subterranean Termites (*Coptotermes gestroi*).

This Declaration is in force for a period of 6 months from the date of its publication in the Gazette.

Any movement of all stages of the Asian Subterranean Termites (*Coptotermes gestroi*) including eggs within or out of the declared biosecurity emergency area is strictly prohibited.

Any movement of any material hosting the Asian Subterranean Termites (*Coptotermes gestroi*) within or out of the declared biosecurity emergency areas is strictly prohibited unless the Biosecurity Authority of Fiji provides prior authorisation for the movement. Host material includes the Asian Subterranean Termites (*Coptotermes gestroi*) nests, soil, potted plants, wood, logs, timber, lumber, kindling, planks, wooden building materials, wooden furniture, live plants, harvested host plants (pine, mango, cassava, coconut and sugarcane) and articles made of cellulose (books, papers, clothing, and textiles that have been stored for a period of time).

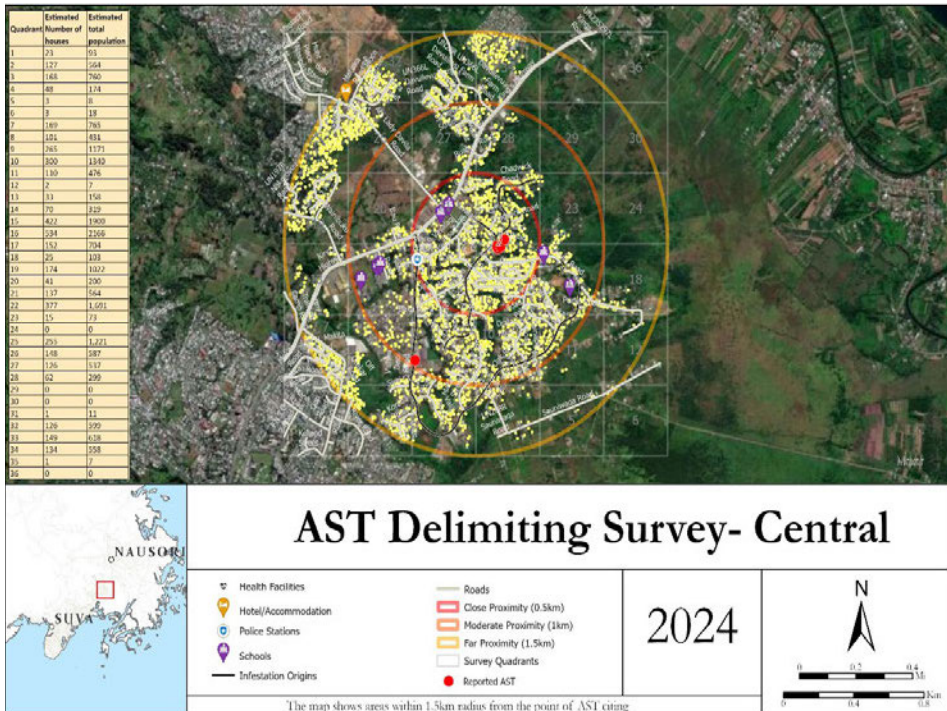
Pursuant to sections 79(3) and 94 of the Biosecurity Act 2008, any person who contravenes any direction made pursuant to this Declaration, commits an offence and is liable for the penalties prescribed under Schedule 5 to the Biosecurity Act 2008.

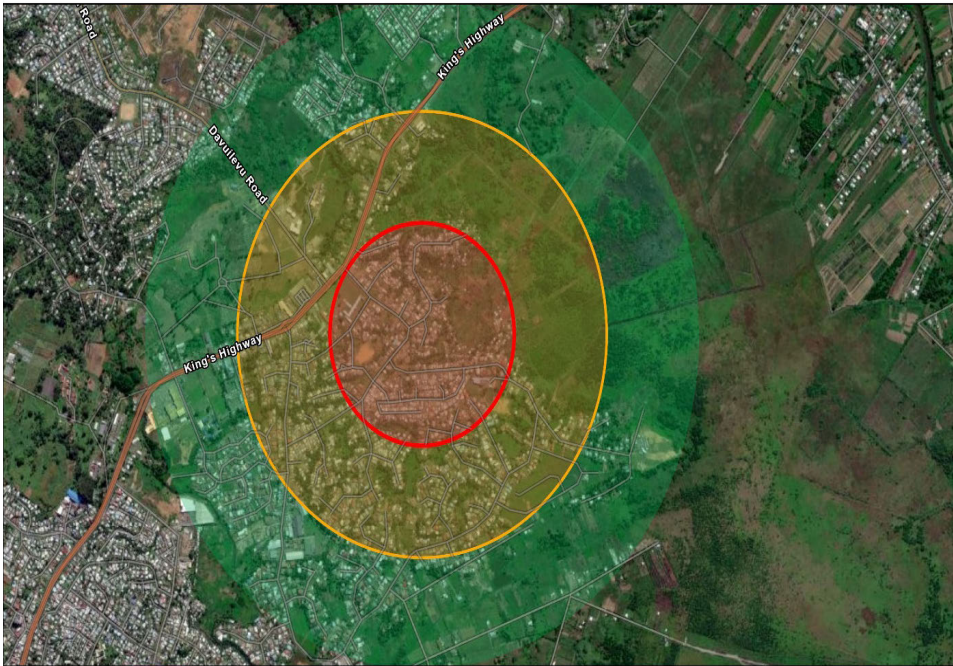
Dated this 1st day of October 2025.

T. N. TUNABUNA
Minister for Agriculture and Waterways

SCHEDULE

ASIAN SUBTERRANEAN TERMITES (*Coptotermes gestroi*)
INFESTED ZONES IN NAKASI








AST ZONE MAP - CENTRAL

Esri, CGLAR, Esri, © OpenStreetMap contributors, HERE, Garmin, Foursquare, MIIT/NASA, USGS, Esri, HERE, Garmin, FAO NOAA, USGS, Maxar

2023

Legend	
	Central_AST_Infestat_Buffer (500M)
	Central_AST_Infestat_Buffer (2KM)
	Central_AST_Infestat_Buffer_1500m